

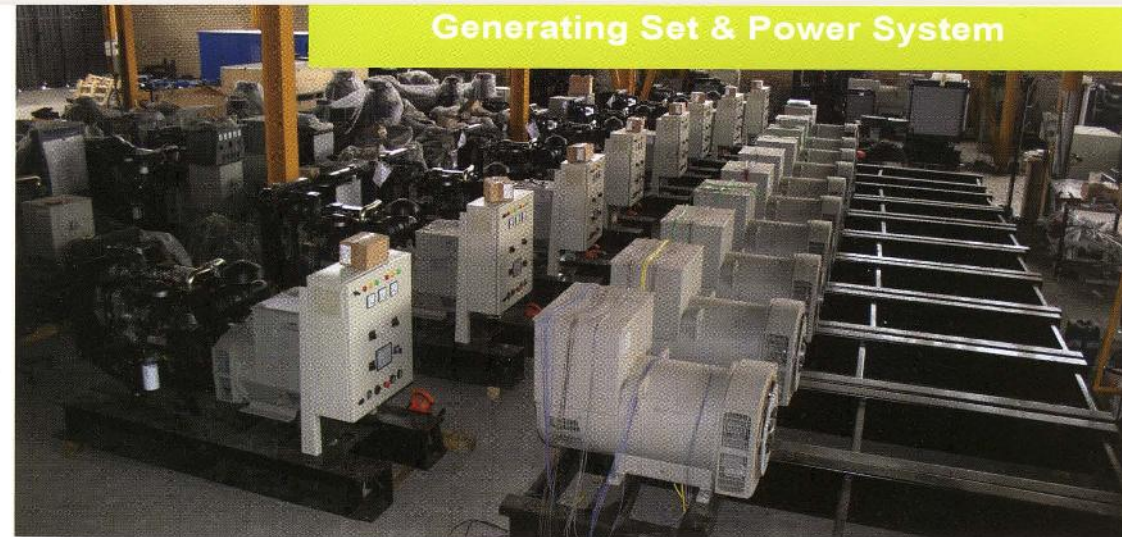


PARS TEHRAN

Engineering and manufacturing
company



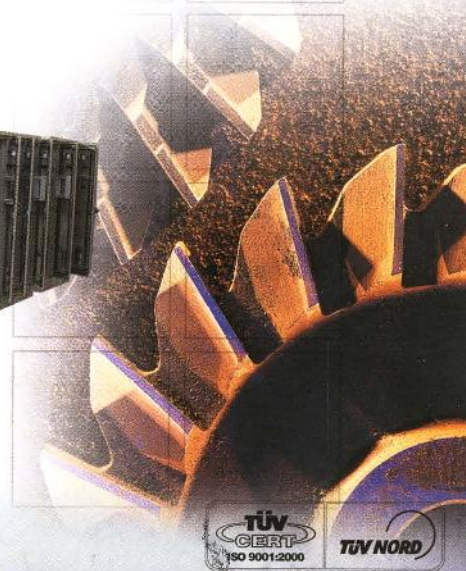
Generating Set & Power System



COMPANY

Pars Tehran ENG Co. progress is based on the ability to meet any requirements of the customer through flexibility in methods of designing & manufacturing of generating sets and associated Electrical Panels. This is achieved also by maintaining Personal Contact to the customers and agents by providing the highest services ever possible in the industry

Our range from 5 KVA to 3400 KVA gen sets and power systems
2000 certified-through using the best brands in market and ISO 9001
.quality management ensure customer satisfaction





RANGES an SERVICES

PARS Tehran Eng. Co. is an O.E.M of generating sets with Internal Combustion Engines covering the range, of 5KVA to 3400KVA for the most famous brands in the world.

Manufacturing of Electrical panels from the simplest to the most sophisticated automatic synchronizing and load sharing panels combined with distribution panels.

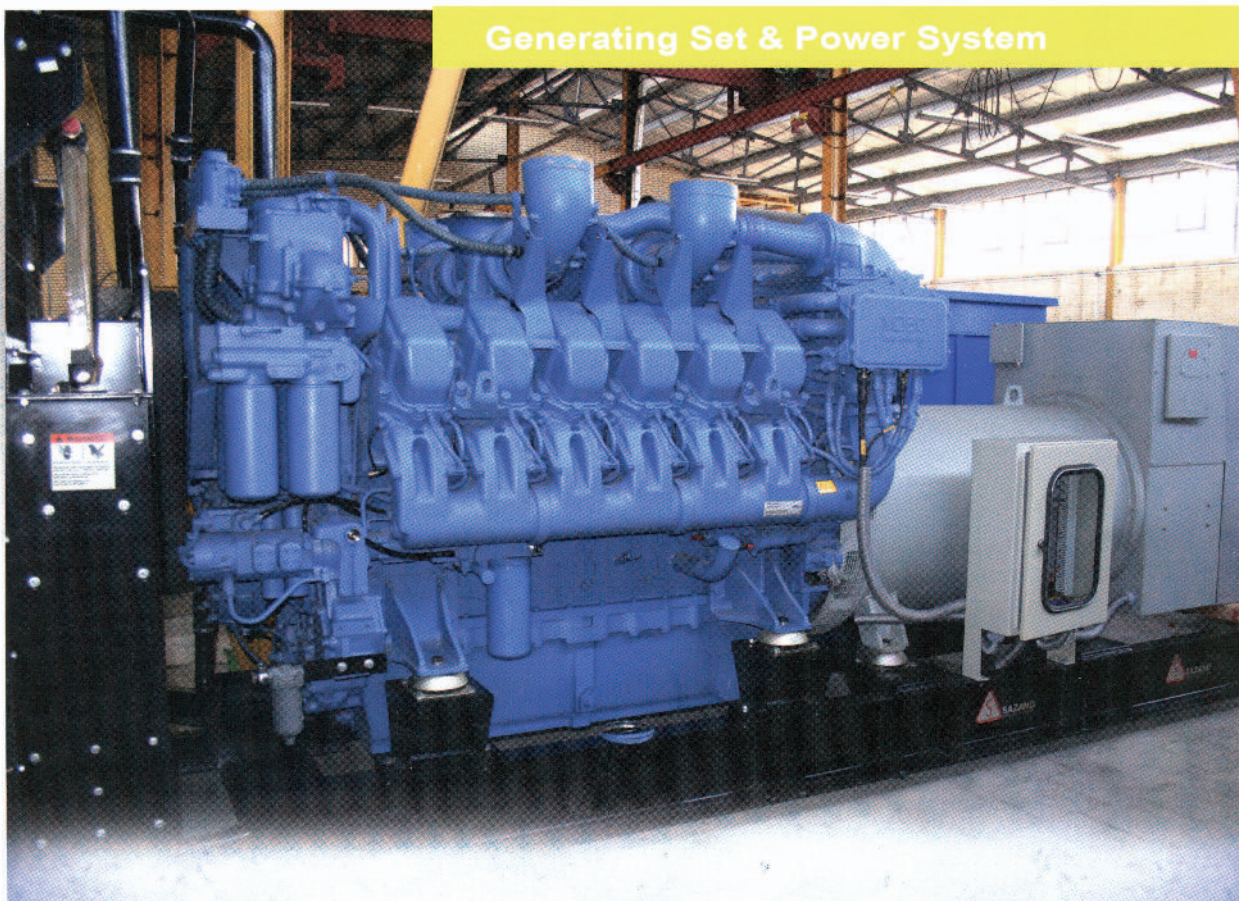
Possibilities of delivery multiples of tens of sets with short delivery.

Manufacturing of the competitive enclosures regarding technical specifications. In wether proof and acoustic canopies.

Trailers combined with canopies in accordance with EEC Regulations.

Engineering services to choose the appropriate size of sets, number of sets optimally in respect to the load and site conditions.

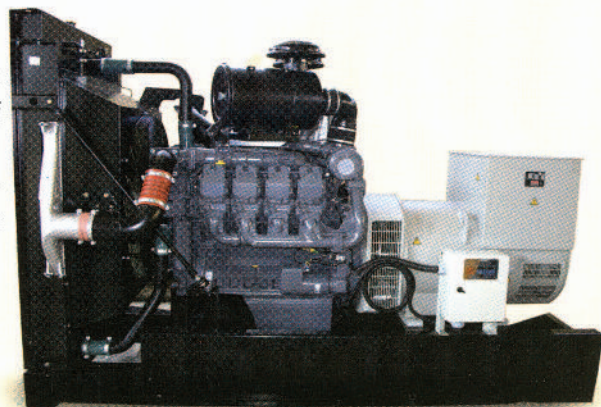
Preparing the drawings and diagrams of civil work, air requirement , exhaust recommendations and fuel piping (P&I D) for the sold sets and power systems.



RANGE OF DEUTZ POWERED DIESEL GENERATING SETS

Deutz - is the oldest engine manufacturer in the world. Its worldwide engine population currently in operation is estimated to be in excess of 2,000,000 units.

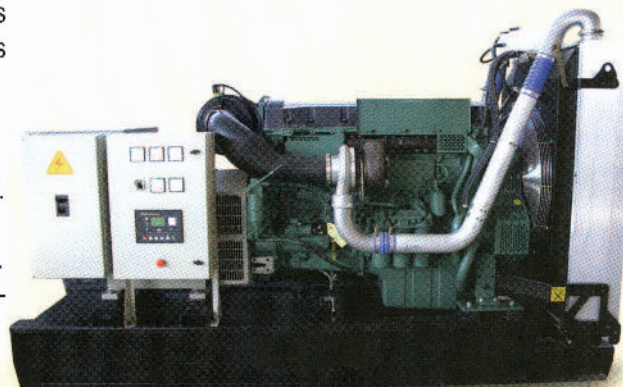
Deutz has a long-established reputation for quality, reliability and economy. Engines are available to a standard build for generating sets from 8-550 Kva. With a full range of air, water and oil cooled engines Deutz



RANGE OF VOLVO POWERED DIESEL GENERATING SETS

Volvo - The industrial division of Volvo Penta has a range of engines dedicated solely for power generation application. Some of the features built in to the power generation range include:

- Low fuel consumption and exhaust emission levels.
- Power output is guaranteed -0 to +2% on delivery.
- High power to weight/size ratio allows installation in restricted areas.
- Minimal maintenance requirement with easy access for servicing.
- Competitive parts pricing with local availability in over 140 countries.
- Less reduction power output for excess ambient temperature and altitudes



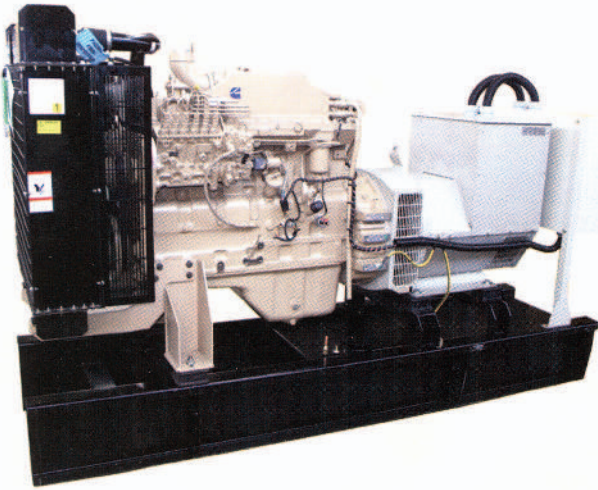
RANGE OF MAN POWERED DIESEL GENERATING SETS

MAN design and manufacture High Performance diesel engines offering

- Excellent single step loading (up to 70%) & rapid transient response
- Low emission levels - all meet T A Luft exhaust emission regulation
- Low noise levels High "power/ weight" & high "power / volume" ratios.
- Very competitive "Total Life Time Running Costs".
- Long intervals between major overhauls - 20,000 hours possible running on the continuous rating (COP -100% non variable load).
- Modular design gives a commonality of parts used within the range, which reduces parts holding and therefore cost.



RANGE OF CUMMINS POWERED DIESEL GENERATING SETS

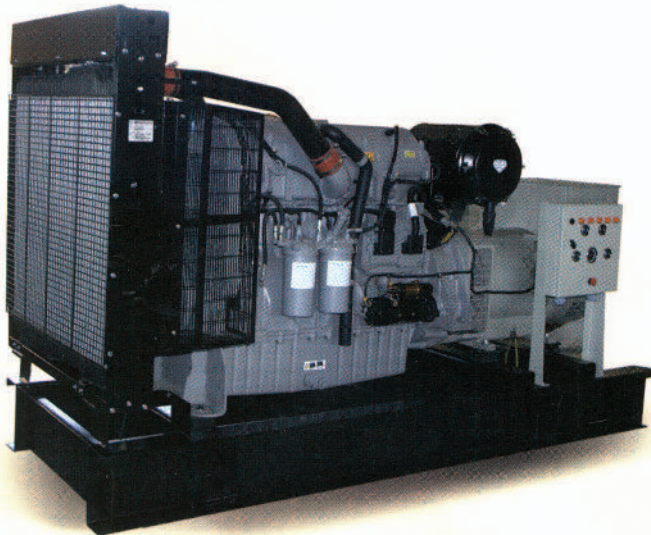


Cummins - is now the world's leading manufacturer of diesels across the 50-2000Kw range, with a massive annual investment in research and engineering. Global manufacturing (in 8 countries) and distribution operations, together with over 80 years of experience, backs every new Cummins diesel for generator set applications.

This new Cummins engine generation (Q-series) is designed to provide the established Cummins benefits of fuel efficiency, high reliability and durability.



RANGE OF PERKINS POWERED DIESEL GENERATING SETS

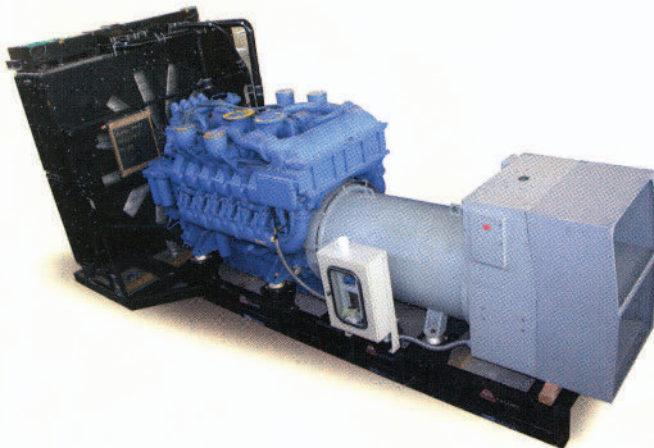


Perkins offers one of the most comprehensive ranges of power units for the power gen market. Perkins is a major player in the power generation business offering a seamless range of products from 7 to 2264KVA.

The list of innovations made by Perkins to further enhance engine performance is considerable, including higher power density, improved load acceptance, low emissions, easier maintenance and reduced operating costs.



RANGE OF MTU POWERED DIESEL GENERATING SETS



MTU 2000 and 4000 series diesel engines are specifically designed for power generation duty. Together covering the power range 565 - 3010Kw, with many common features throughout:

- Two engine series, seven basic frame sizes, all equipped with MTU's ADEC integrated engine management system.
- Rapid engine starting, with low smoke and rapid acceptance of load.
- Highest standard of steady-state and transient load performance.
- Constant monitoring of all engine systems, with data output for the end-user.
- Compact, low weight design.
- Low noise and exhaust emissions levels.
- Low fuel consumption at full and part-load conditions.
- User-friendly access for maintenance and through-life costs.





CONTROLS AND MONITORING

- All the Electrical panels by using CAD facilities are designed to have the ability to change circuits and features by customer Specifications and necessities.

All the enclosures are painted by electrostatic powder quoting and enameled procedure. with each project submits an as built drawing.

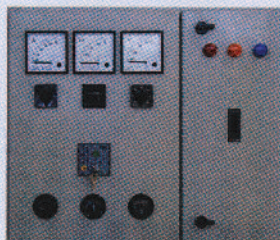


Manual micro-based panels



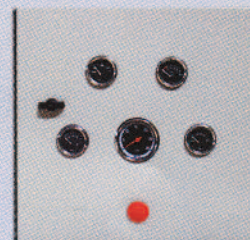
Power and control panels via power circuit Breaker with simple to sophisticated plc. Manual to Automatic synchronizing

Manual conventional panels



Power and control panel via key – switch simple controller and Analogue Instrumentation.

Engine Panel



Special Analogue Instrumentation on engines as option.



PTD Deutz

20 kVA - 560 kVA

Model	Prime power (Kva/Kw)	Standby power (Kva/Kw)	Engine type	Engine Power (hp)	No. cyl & Configuration	Alternator	Dry Weight (kg)
PTD-30	29/23	30/24	F3L912	33	3L	Stamford or equivalent	580
PTD-40	41/33	42/34	F4L912	46	4L	Stamford or equivalent	820
PTD-60	61/49	62/50	F6L912	67	6L	Stamford or equivalent	960
PTD-65	65/52	57/46	BF4M2012	70	4L	Stamford or equivalent	1190
PTD-80	73/59	78/63	BF4M2012C	85	4L	Stamford or equivalent	1200
PTD-100	90/72	100/80	BF4M1013E	108	4L	Stamford or equivalent	1600
PTD-110	102/82	108/86	BF4M1013EC	117	4L	Stamford or equivalent	1740
PTD-140	134/107	141/113	BF6M1013E	152	6L	Stamford or equivalent	2100
PTD-165	157/126	165/132	BF6M1013EC	177	6L	Stamford or equivalent	2160
PTD-225	203/162	223/178	BF6M1013FCG	240	6L	Stamford or equivalent	2280
PTD-275	250/200	275/220	BF6M1015	295	6V	Stamford or equivalent	2600
PTD-380	350/280	388/311	BF6M1015CG	417	6V	Stamford or equivalent	2680
PTD-415	380/304	412/330	BF6M1015CP	443	6V	Stamford or equivalent	2800
PTD-480	430/344	477/382	BF8M1015CG	512	8V	Stamford or equivalent	2850
PTD-560	510/408	558/446	BF8M1015CP	599	8V	Stamford or equivalent	3000



PTC Cummins 30 kVA - 2050 kVA

Model	Prime power (Kva/Kw)	Standby power (Kva/Kw)	Engine type	Engine Power (hp)	No. cyl & Configuration	Alternator	Dry Weight (kg)
PTC -35	30/24	33/26	4B3.3G1	111	4L	Stamford or equivalent	645
PTC - 40	35/28	38/30	4B3.3G1	128	4L	Stamford or equivalent	705
PTC -55	50/40	55/44	4BT3.3G2	166	4L	Stamford or equivalent	776
PTC -70	63/50	70/56	4BT3.9G4	166	4L	Stamford or equivalent	1038
PTC-90	80/64	88/70	4BTA3.9G3	194	4L	Stamford or equivalent	1050
PTC -110	100/80	110/88	4BTA3.9G4	240	4L	Stamford or equivalent	1200
PTC -150	136/109	150/120	6BTA5.9G3	264	6L	Stamford or equivalent	1216
PTC -200	182/146	200/160	6CTA8.3G2	323	6L	Stamford or equivalent	1900
PTC -220	200/160	220/176	6CTAA8.3G3	355	6L	Stamford or equivalent	1900
PTC -250	227/182	250/200	6CTAA8.3G2	413	6L	Stamford or equivalent	2000
PTC -275	250/200	275/220	QSL9G3	475	6L	Stamford or equivalent	2934
PTC -300	275/220	300/240	QSL9G5	519	6L	Stamford or equivalent	3157
PTC -330	300/240	330/264	QSL9G5	578	6L	Stamford or equivalent	3157
PTC -350	320/256	350/280	NT855G6	638	6L	Stamford or equivalent	3448
PTC -400	360/288	400/320	NTA855G4	719	6L	Stamford or equivalent	3643
PTC -440	400/320	440/352	NTA855G7	798	6L	Stamford or equivalent	3775
PTC -500	450/360	500/400	QSX15G6	413	6L	Stamford or equivalent	4069
PTC -550	500/400	550/440	QSX15G8	475	6L	Stamford or equivalent	4199
PTC -575	500/400	575/460	KTA19G4	519	6L	Stamford or equivalent	4410
PTC -650	590/472	650/520	KTA19G8	578	6L	Stamford or equivalent	4410
PTC -700	640/512	706/565	VTA28G5	638	V12	Stamford or equivalent	5665
PTC -825	750/600	825/660	QSK23G3	719	6L	Stamford or equivalent	7105
PTC -900	820/656	900/720	QSK23G3	798	6L	Stamford or equivalent	7105
PTC -1050	939/751	1041/833	QST30G3	413	V12	Stamford or equivalent	6141
PTC -1100	1000/800	1110/888	QST30G4	475	V12	Stamford or equivalent	8000
PTC -1400	1250/1000	1400/1120	KTA50G3	519	V16	Stamford or equivalent	10963
PTC -1675	1400/1120	1675/1320	KTA50G8	578	V16	Stamford or equivalent	11921
PTC -2050	1875/1500	2063/1650	QSK60G3	638	V16	Stamford or equivalent	15012



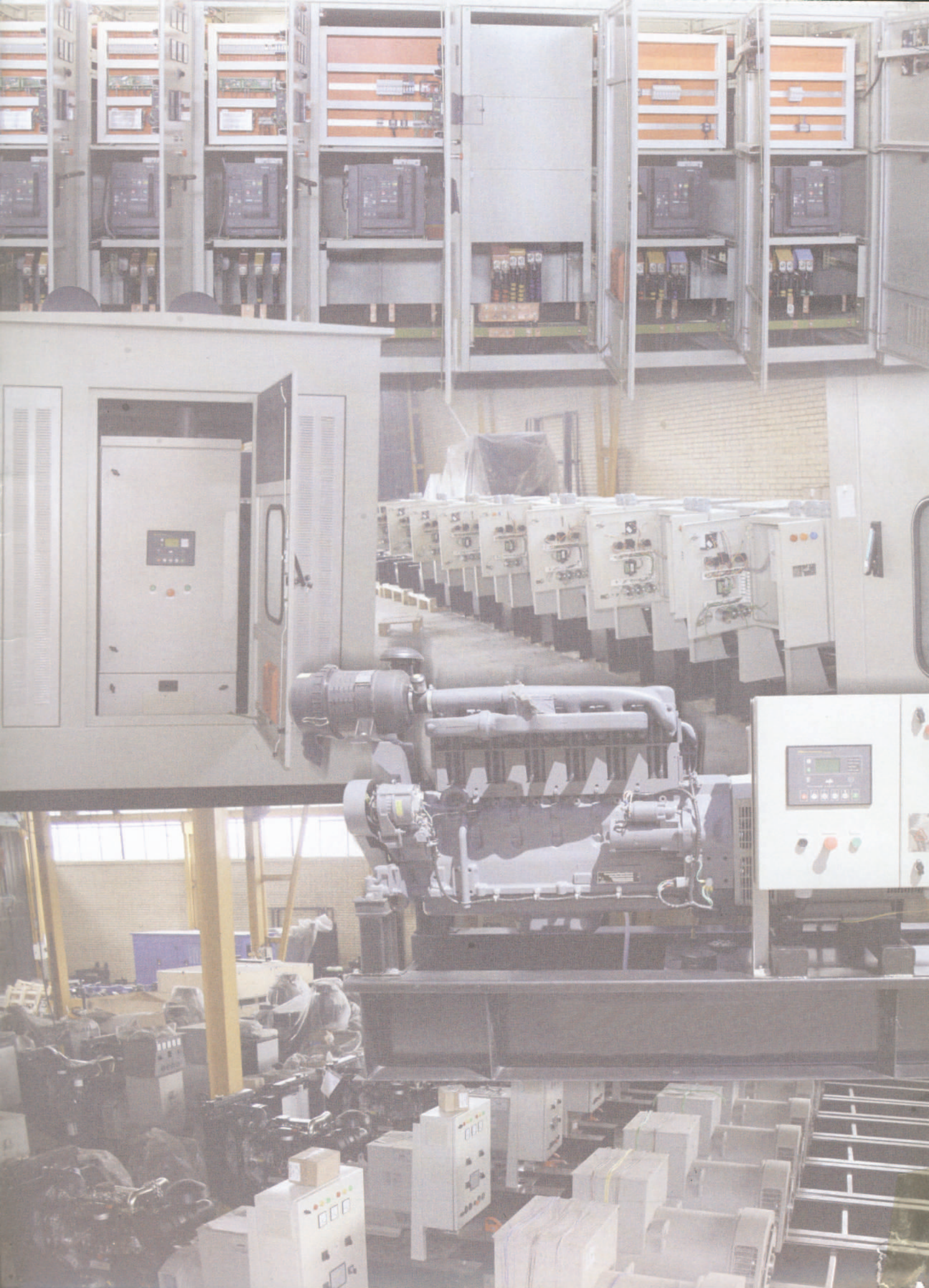
PTP Perkins 20 kVA - 1000 kVA

Model	Prime power (Kva)	Standby power (Kva)	Engine type	Engine Power (hp)	No. cyl & Configuration	Alternator	Dry Weight (kg)
PTP-22	20	22.5	404C-22G	27.2	4L	Stamford or equivalent	500
PTP-35	33	33	1103A-33G	40.8	3L	Stamford or equivalent	650
PTP-50	45	50	1103A-33TG1	61.2	3L	Stamford or equivalent	802
PTP-65	60	66	1103A-33TG2	79.5	3L	Stamford or equivalent	850
PTP-75	65	72	1104A-44TG1	86.2	4L	Stamford or equivalent	850
PTP-90	80	88	1104A-44TG2	106	4L	Stamford or equivalent	860
PTP-110	100	110	1104C-44TAG2	132	4L	Stamford or equivalent	930
PTP-150	135	150	1006TAG	185	6L	Stamford or equivalent	1200
PTP-165	150	165	1006TAG2	193	6L	Stamford or equivalent	1500
PTP-230	208	229	1306C-E87TAG3	267	6L	Stamford or equivalent	1900
PTP-275	250	275	1306C-E87TAG6	320	6L	Stamford or equivalent	2050
PTP-400	350	400	2306C-E14TAG2	461	6L	Stamford or equivalent	2850
PTP-450	400	450	2306C-E14TAG3	519	6L	Stamford or equivalent	2900
PTP-500	453	503	2806C-E16TAG1	581	6L	Stamford or equivalent	3400
PTP-550	503	553	2806C-E16TAG2	632	6L	Stamford or equivalent	3500
PTP-650	556	641	2806C-E18TAG1	735	6L	Stamford or equivalent	3750
PTP-700	641	706	2806C-E18TAG2	807	6L	Stamford or equivalent	4000
PTP-800	730	800	4006-23TAG2A	919	6L	Stamford or equivalent	5150
PTP-900	800	900	4006-23TAG3A	1019	6L	Stamford or equivalent	5500
PTP-1000	905	996	4008TAG1A	1125	8L	Stamford or equivalent	7800



PTV Volvo 80 kVA 700 kVA

Model	Prime power (Kva/Kw)	Standby power (Kva/Kw)	Engine type	Engine Power (hp)	No. cyl & Configuration	Alternator	Dry Weight (kg)
PTV -95	85/68	94/75	TD520GE	111	4L	Stamford or equivalent	1200
PTV -110	100/80	109/87	TAD531GE / TAD520GE	128	4L	Stamford or equivalent	1250
PTV -145	130/104	142/114	TAD730GE / TD 720	166	6L	Stamford or equivalent	1750
PTV -165	152/121	167/133	TAD731GE / TAD720GE	194	6L	Stamford or equivalent	1750
PTV -205	182/145	206/165	TAD732GE	240	6L	Stamford or equivalent	1800
PTV -225	206/165	227/181	TAD733GE	264	6L	Stamford or equivalent	1900
PTV -275	250/200	275/220	TAD734GE	323	6L	Stamford or equivalent	1950
PTV -305	277/222	305/244	TAD940GE	355	6L	Stamford or equivalent	2100
PTV -360	325/260	358/286	TAD941GE	413	6L	Stamford or equivalent	2160
PTV -415	375/300	412/329	TAD1241GE	475	6L	Stamford or equivalent	2700
PTV -450	409/327	450/360	TAD1242GE	519	6L	Stamford or equivalent	3000
PTV -500	462/369	506/405	TAD1640GE	578	6L	Stamford or equivalent	3200
PTV -550	509/407	559/447	TAD1641GE	638	6L	Stamford or equivalent	3300
PTV -630	570/456	630/504	TAD1642GE	719	6L	Stamford or equivalent	3350
PTV -700	630/504	700/560	TWD1643GE	798	6L	Stamford or equivalent	3500



Your Reliable Power & Control Partner



Add: Unit 8, #32, Jalal Al Ahmad Ave, Tehran, Iran
Tel: (+9821) 88270086, (+9821) 88245419, (+9821) 88245420
Fax: (+9821) 88256834

ptco@parstehran.ir
www.parstehran.ir