

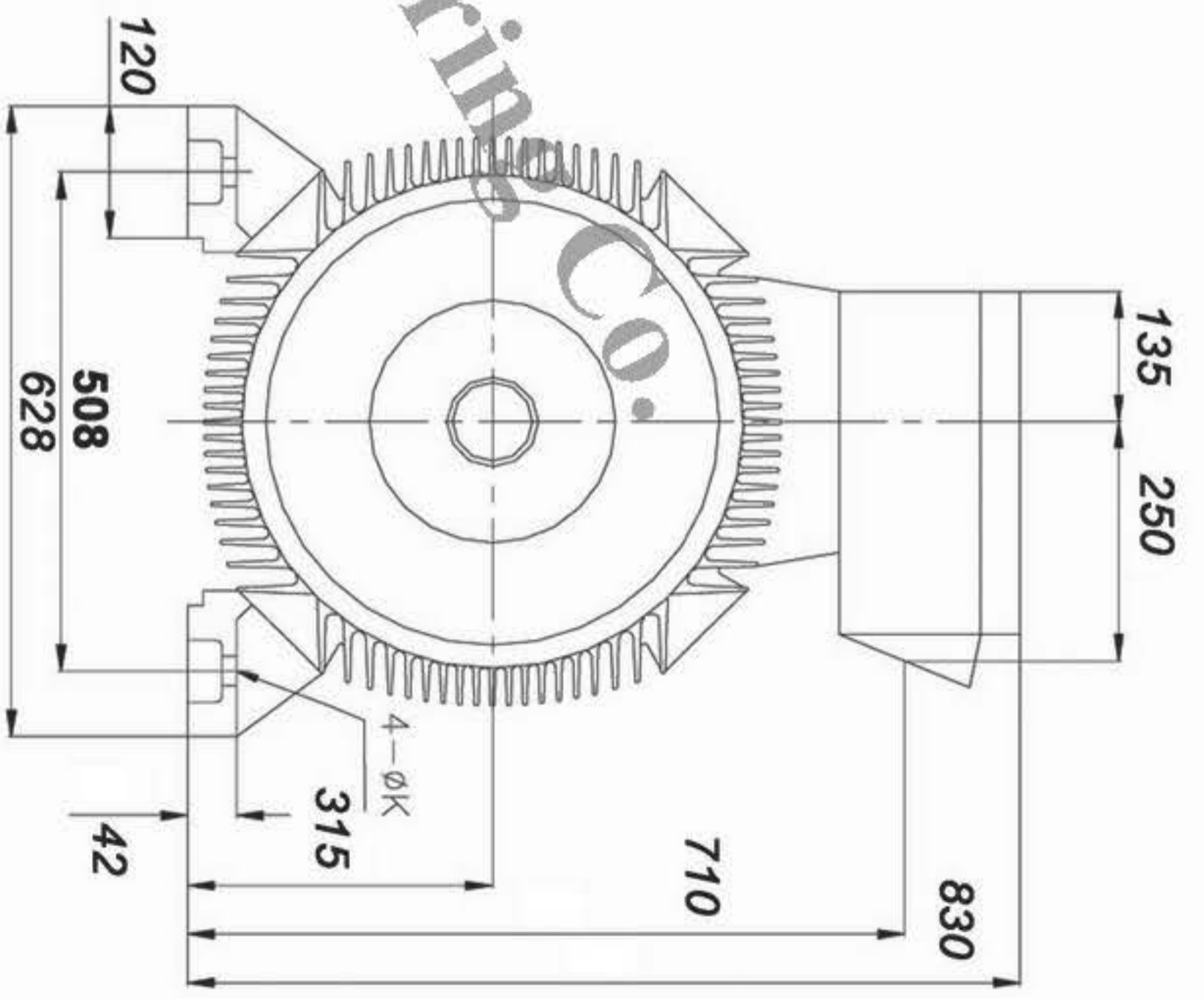
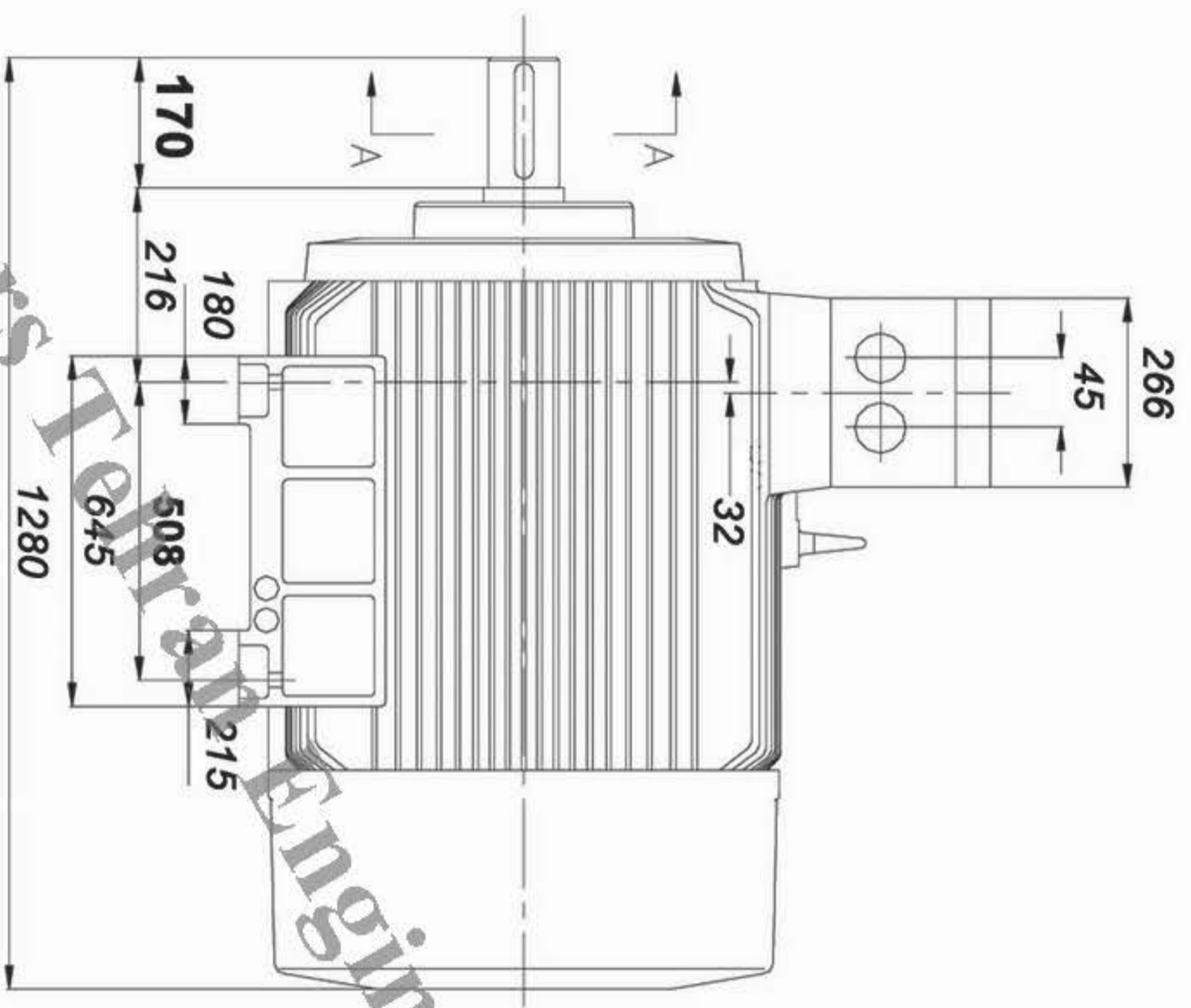
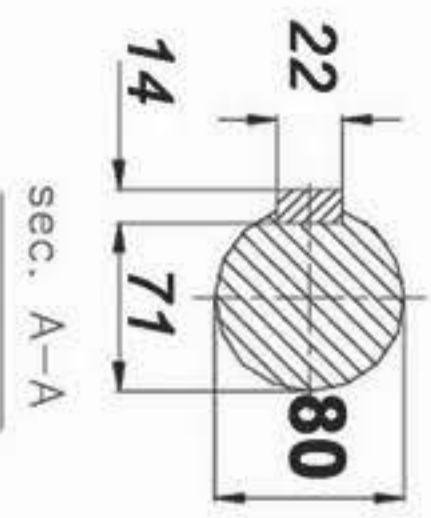


DATA SHEET JEMCO



Subject: Low voltage squirrel cage induction motors


Customer			Manufacturer Jemco			
Motor Type		YU1314-4A0		Average sound pressure level	No load	load
Frame Size	315L	Number of poles	4			
Mounting design	B3	Type of encloser	IP-55	Direction of rotation <input type="checkbox"/> both <input type="checkbox"/> CW <input type="checkbox"/> CCW <input type="checkbox"/>		
EX-Protective system			Bearing DE/NDE 6208-2z/6208-2z			
Duty type	S1	Starting		Lubrication		
Ambient Temperture		55 C		Type of lubrication		
Thermal classification		F	Tempertur rise	B	Relubrication	
Term motor protection			outline dimation drawing No.			
Retad output			185 KW		Location of Terminal Box	
rated voltage		380V		Number of terminals		
connection		DELTA		Cable entry thread		
Ferquency	50 HZ.	speed	1487	rpm	Net weight approx. 1335 Kg	
Rated current			329		A	
Starting Current			(I _A /I _N)		7	
Power Factor		4/4	3/4	1/2	Additional data and remarks: 1- Bearing Brand European :SKF,FAG	
		0.89				
Efficiency		4/4	3/4	1/2		
		94.6%				
Rated torque		(M _N)		1284 Nm		
starting torque		(M _A /M _N)=				
Break-down torque		(M _k /M _N)=		2%		
Rotor class						
Rotor voltage		Rotor current				
Moment of inertia			4.50 Kgm ²			
Torque characteristic						
Attachments						
	Date	Name	Tolerances acc. To			NO.
Designed						
checked						



Pars Tehran Engineering Co.

PARS TEHRAN ENG. CO.
PTCO



	Offer No.:
Power: 185Kw	Project:
Date:	Code: YU1314-4A0
Unit: mm	Frame: 315L
JEMCO	